



**PUBLIC SUMMARY
SURVEILLANCE 2 ON
KEJIN LONG LAMA FOREST PLANTATION MANAGEMENT UNIT (FMU) – LPF 0017
FOR FOREST MANAGEMENT CERTIFICATION**

**Certificate Number: FPMC 00114
Date of First Certification: 3rd February 2017
Audit Date: 3rd - 4th December 2018
Date of Public Summary: 18th May 2019**

Certification Body:

**SIRIM QAS International Sdn. Bhd.
Block 4, SIRIM Complex
No. 1, Persiaran Dato' Menteri
Section 2, 40700 Shah Alam
Selangor
MALAYSIA
Tel : 60-3-5544 6400/5544 6448
Fax : 60-3 5544 6763
Website : www.sirim-qas.com.my**

TABLE OF CONTENTS

	Page No.
1. EXECUTIVE SUMMARY	3
2. INTRODUCTION	4
2.1 Name of FPMU	4
2.2 Contact Person and Address	4
2.3 General Background on the Kejin Long Lama FPMU	4
2.4 Date First Certified	4
2.5 Location of the FPMU	4
2.6 Forest Management System	4
2.7 Annual Allowable Cut/ Annual Harvest Under the Forest Management Plan	5
2.8 Environmental and Socioeconomic Context	5
3. AUDIT PROCESS	5
3.1 Audit Dates	5
3.2 Audit Team	5
3.3 Standard Used	5
3.4 Stakeholder Consultations	5
3.5 Audit Process	6
4. SUMMARY OF AUDIT FINDINGS	6
<u>Attachments</u>	
1 Map of Kejin Long Lama FPMU	19
2 Details of Auditors and Qualification	20
3 Comments Received From Stakeholders and Responses by Audit Team Leader	22
4 Surveillance 2 Audit Plan	23
5 Surveillance 2 Audit Findings and Corrective Action Taken	24
6 Verification on Previous Surveillance 1 Audit Findings and Action Taken	30

EXECUTIVE SUMMARY

This surveillance 2 audit on the Kejin Long Lama Forest Plantation Management Unit (hereafter referred as the Kejin Long lama FPMU) was conducted on 3-4 December 2018 to assess the continued compliance of the overall forest management system of the Kejin Long Lama FPMU against the requirements of the *Malaysian Criteria and Indicators for Forest Plantation Management Certification* [MC&I (Forest Plantation.v2)] using the verifiers stipulated for Sarawak. The scope of this surveillance 2 audit was limited to the forest plantation management system and practices on the Kejin Long lama FPMU.

This surveillance 2 audit was conducted by a 3-member team comprising Mohd.Razman Salim (Lead Auditor), Ismail Adnan Abdul Malek (Auditor), and Puteri Arlydia Abdul (Auditor).

Based on the findings of this surveillance 2 audit, it was found that Kejin Long Lama FPMU had continued to comply with the requirements of the MC&I (Forest Plantation.v2). This surveillance 2 audit had resulted in the issuance of 2 (two) and 3 (three) major and minor Non Conformity Reports (NCRs) respectively. In addition, 3 (three) Observation for Improvements (OFIs) were raised.

This public summary contains the general information on the Kejin long lama FPMU, the findings of the surveillance 2 audit, NCRs raised as well as the decision on the continued certification of the FPMU.

2 INTRODUCTION

2.1 Name of FPMU

Kejin Long Lama Forest Plantation Management Unit

2.2 Contact Person and Address

Name: Tiong Sian Kiing

Designation: Administration Manager

Address: Lot 515, Jalan Datuk Edward Jeli, Piasau Industrial Estate, 98000 Miri, Sarawak.

Phone #: 085 656699

Fax #: 085 655311

E-mail: siankiing@shinyang.com.my

2.3 General Background on the Kejin Long Lama FPMU

The Kejin Long Lama FPMU is managed by the Shin Yang Forestry Sdn Bhd. The Shin Yang Forestry Sdn Bhd is committed in the management of the FMU on a sustainable basis. Shin Yang Forestry Sdn Bhd has been granted a License for Planted Forest LPF0017 by the Sarawak State Government to develop a forest plantation in the LPF/0017 for a period of 60 years commencing from 19 November 1999 to 18 November 2059.

Kejin Long Lama FPMU is about 45km south of Marudi town, and located just upstream of Long lama bounded by Batang Baram on the west; Sg. Palutan on the south; S. Aban Deng, Sg. Buan, Sg. Teloak on the east; and Sg. Temala and cut – lines on the north. The FPMU is located at latitudes approximately 030 29.7'N to 030 49.8' N and longitudes 1140 23.7' E to 1140 42.3' E in the Baram District, Miri, Sarawak.

The scope of audit was limited to the forest plantation management system and practices of the plantation forest area within the part of coupes 1A, 2A, 3A and 6A which located in the Licensed Plantation Forest (LPF) 0017 with total area of 28,093.35 ha.

Total gross area that can be planted within the Coupes 1 to 3 and Coupe 6 of the LPF 0017 undergoing this certification audit amounted to 28,093.35 ha out of the total size of the FPMU of 65,178 ha including areas for water catchment, shifting cultivation and bird nest area. To date a total 5,093 ha have been planted with fast rowing plantation species while 6,638.65 ha were enriched with planting of forest tree species. However, the whole of Coupe 4 and 5 not yet converted to forest plantation and still a natural forest area. While for Coupe 7, 8, and 9 was cleared and planted after year 2010. The whole area of Coupe 10 not yet develop to forest plantation, still natural forest.

A map of the FMU showing the significant features of the forest is attached in **Attachment 1**.

2.4 Date First Certified

3rd February 2017

2.5 Location of the FPMU

The FPMU is located at latitudes approximately 030 29.7'N to 030 49.8' N and longitudes 1140 23.7' E to 1140 42.3' E in the Baram District, Miri, Sarawak.

2.6 Forest Management System

The Kejin Long Lama FPMU had followed the principles of sustainable forest plantation management and the requirements of the Licence Agreement of the State government. Forest Plantation Management Plan LPF0017 Kejin Long Lama FPMU (Rev. 005: January 2014 - December 2023) was revised on 26 June 2018 was presented during this audit.

2.7 Annual Allowable Cut/Annual Harvest under the Forest Management Plan

The annual allowable cut (AAC) for the Kejin Long lama FPMU had been set at annual rate of harvest of 727.57 ha/year. During this surveillance 2 audit, the size of the FMU is 28,093.35 ha.

2.8 Environmental and Socioeconomic Context

An EIA report “*Environmental Impact Audit Report for the Proposed Long Lama Forest Plantation in Long Lama Miri March 2000*” was produced. The potential impacts and strategies to mitigate the impacts were written in this report. This report had also considered on-site impacts as well as at landscape level. This report was submitted and approved by Natural Resources and Environmental Board (NREB).

The EIA report had indicated an absence of endangered, rare and threatened species of flora and fauna within the plantation area owing to the intensity of logging conducted. Chapter 7 of the FPMP had incorporated measures to mitigate environmental impacts. These included water quality, fertilizer application, riparian buffer, socio-economic aspects, domestic waste, health and safety and pest and diseases.

On the socio-cultural and local communities, the FPMU had identified six settlements of local communities staying within and adjacent the certified area which are Uma Akeh (Kenyah), Kampung Sungai Dua (Kayan), Uma Bawang Kiri (Kayan), Long Tepen (Penan), Long Lunyim (Penan) and Long Lama Town (Chinese/Kayan). Four communities of Uma Akeh (Kenyah), Kampung Sungai Dua (Kayan), Uma Bawang Kiri (Kayan), and Long Tepen (Penan) located along Batang Baram. While for Long Lunyim (Penan) and Long Lama Town (Chinese/Kayan) located along Sungai Pelutan.

3. AUDIT PROCESS

3.1 Audit Dates

3rd- 4th December 2018 (6 man-days)

3.2 Audit Team

Mohd. Razman Salim(Lead Auditor)
Ismail Adnan Abdul Malek(Forester)
Puteri Arlydia Abdul (Forester)

The details on the experiences and qualifications of the audit team members are as in **Attachment 2**.

3.3 Standard Used

Malaysian Criteria and Indicators for Forest Plantation Management Certification [MC&I (Forest Planation.v2)] using the verifiers stipulated for Sarawak

3.4 Stakeholder Consultations

A stakeholder notification was issued on November 2018 for a period of one month inviting relevant stakeholders to give comments on the FPMU. There was a comment received from the National Resource Environmental Board (NREB) on the FPMU during the period. The comments by the stakeholders and responses by the audit team are shown in Attachment 3.

3.5 Audit Process

The audit was conducted primarily to evaluate the level of continued compliance of the Kejin Long Lama FPMU's current documentation and field practices in forest plantation management with the detailed of the standard of performances (SOPs) listed in the MC&I Forest Plantation.v2, using the verifiers stipulated for Sarawak.

For each Indicator, the auditors had conducted either a documentation review, consultation with the relevant personnel of the FPMU, local community or stakeholders or field audit or a combination of these methods. Depending on the compliance with the verifiers for a particular indicator, the auditors then decided on the degree of the FPMU's overall compliance with the indicator and decided whether or not to issue a major or minor NCR or an OFI which is defined as follows:

- (i) a major NCR is a non-compliance with the requirements of the MC&I Forest Plantation.v2;
- (ii) a minor NCR is a deviation or a lapse in complying with the requirements of the MC&I Forest Plantation.v2; and
- (iii) an OFI is a situation where the auditor has noted an area of concern on the capability of the forest management system to achieve conformance to the requirements of the MC&I Forest Plantation.v2 but without sufficient objective evidence to support a non-conformance.

Consultations were held with the local communities in Long Tepen which is located adjacent to the Kejin Long lama FPMU. The audit team had also held interview with the workers of the Kejin Long Lama FPMU.

The coverage of this surveillance 2 audit is as shown in the Surveillance 2 Audit Plan in **Attachment 4**.

The Kejin Long lama FPMU had sent a corrective action plan to the audit team to address the major and minor NCRs which the audit team had reviewed and accepted them. The audit team had prepared an interim surveillance 2 audit report and sent it to the Kejin Long Lama FPMU for comment.

4 SUMMARY OF AUDIT FINDINGS

Based on the findings of this surveillance 2 audit, it was found that the kejin Long Lama FPMU had continued to manage the Kejin Long Lama FPMU in compliance with most of the requirements of the MC&I Forest Plantation.v2. This surveillance 2 had resulted in the issuance of 2 major, 3 minor NCRs and 3 OFIs. The details on the NCRs/OFIs raised are shown in **Attachment 5**.

The audit team had reviewed, accepted and verified the corrective actions taken by the Kejin Long Lama FPMU to address the 2 (two) major NCR raised during this surveillance 2 audit. The audit team was satisfied that the corrective action had been effectively implemented and had therefore closed out this major NCR. The audit team had also reviewed and accepted the Kejin Long Lama FPMU's proposed corrective actions to address the 3 (three) minor NCRs. However, these corrective actions shall be verified by the audit team during the next audit.

The audit team had also verified on the corrective actions taken by the Kejin Long Lama FPMU to address the 2 (two) Major NCR, 8 (Eight) Minor NCRs and 2 (two) OFIs which were raised during the previous audit. The responses made by the audit team leader on these corrective actions and on the final status of the NCRs and OFIs are as in **Attachment 6**.

On community rights, there were mechanisms in place to resolve disputes over tenure and use rights. The commitment of FPMU towards addressing Grievances/Conflicts from local communities is demonstrated through a written SYF/MC&I/P.09 Mechanism to Resolve Local Communities Issues Rev 3 dated 22/09/2015. It was observed that there was no recorded civil

court case pertaining to legal or customary tenure or use rights filed against the Kejin Long Lama FPMU.

As the major NCR raised during this surveillance 2 audit had been closed out, the audit team had therefore recommended that the Certificate for Forest Plantation Management be awarded to the Kejin Long Lama FPMU be maintained.

The summary of the findings of the surveillance 2 audit on the Kejin Long Lama FPMU against the requirements of the MC&I Forest Plantation.v2 are as follows:

Principle	Strengths	Weaknesses
<p>Principle 1 Compliance With Laws and Principles</p>	<p>Records and availability of up-to-date relevant federal and state laws, regulations and policies, in particular those related to forest plantation management were made available at the time of audit at Kejin LPF0017 FPMU camp office.</p> <p>Up-to-date list and documents of all legally prescribed fees, royalties, taxes, and other charges were available and sighted at the Kejin Long Lama FPMU (LPF0017) camp office.</p> <p>The Management Review meeting among the FPMUs under Shin Yang were held, an assessment of any potential conflicts between laws, regulations and the Principles and Criteria was made.</p> <p>Legal provisions were available for the establishment and protection of the forest plantation. Shin Yang Forestry Sdn Bhd has signed an agreement with the Sarawak Government to manage the LPF0017 into a commercial forest plantation for a period of 60 years from 19 November 1999 to 18 November 2059.</p> <p>Control of encroachment, illegal harvesting, hunting, fishing and settlement, and other unauthorized activities were conducted monthly.</p>	<p>There were no negative findings</p>
<p>Principle 2 Tenure and Use Rights and Responsibilities</p>	<p>Documentation of legal status, including forest use rights of the land or forest resources for Shin Yang Kejin Licensed</p>	<p>There were no negative findings</p>

	<p>Planted Forest (LPF/0017) has been made available inclusive among others; licensed agreement of FPMU was available for 60 years, i.e. covering the period 19 November 1999 to 18 November 2059.</p> <p>All relevant documents on legal or customary tenure or use rights of local communities within relevant federal and state legal frameworks for the forest plantation area has been retained and made available during the audit.</p> <p>Interview with local communities (Long Tepen) has confirm it has been confirmed no further conflict issue against local communities with regards to legal or customary tenure or use rights has been raised</p> <p>FMU has demonstrate to recognise, respect and collaborate with holders of duly recognised use rights (road access, water intake, water catchment, shifting agriculture, fishing, hunting, non-wood forest products e.g. firewood, ulam, non-wood craft, wood utilisation for personal housing, cultural, historical & religious sites).</p>	
<p>Principle 3 Indigenous Rights</p> <p>People's</p>	<p>Documents relevant to the customary rights of indigenous people, in accordance to the Land Ordinance (Land Code; Chapter 81) and established native customary rights of the State (Native Customs (Declaration) Ordinance, 1992 has been maintained at Kejin Long Lama camp.</p> <p>There is an area of customary use land had been designated under SA for the use of the local communities. These areas have been under the control of the respective long houses within the FPMU.</p>	<p>There were no negative findings</p>

	<p>The FPMU had been operating in the area as prescribed by the License for Planted Forests License no. LPF/0017 with specified conditions. Records of previous disputes over use rights in the FPMU has been available. These indicated prohibition of planting in Coupes 4, 5 and 7 (non-certified FPMU area). The management had excluded these areas as Shifting Agriculture (SA) by local communities from the certified forest plantation areas.</p> <p>As part of the social contribution the management of the FPMU had provided free transportation to the local communities on requests, foods and drinks for special occasions, repair of access roads to longhouses. The management had also assisted in the construction of a long house for the Long Tepen communities.</p> <p>The commitment of FPMU towards addressing Grievances/Conflicts from local communities is demonstrated through a written SYF/MC&I/P.09 Mechanism to Resolve Local Communities Issues Rev 3 dated 22/09/2015 that has been maintained.</p>	
<p>Principle 4 Community Relations and Worker's Rights</p>	<p>Forest plantation managers had provide, support for training, retraining, local infrastructure, facilities and social programmes commensurate with the scale and intensity of forest plantation management operations. The FPMU have been providing various assistances to local communities from time to time comprising donation.</p> <p>Qualified people in communities living within, or adjacent to forest plantation areas are given preference for employment and contract works. About 18% of local</p>	<p>Person incharge for schedule waste found to be incompetent to ensure that scheduled waste within certified FPMU areas is managed properly in accordance with the legal requirement. Minor NCR LYD-01/2018 for Indicator 4.1.1 has been raised</p> <p>The employer has not, within 7 days, send a report thereof in an approved form to the Department of Occupational Safety and Health office on accident</p>

	<p>communities (Long Tepen & Long Ludim) has been employed out of 130 staff and workers.</p> <p>Records of dissemination of up to-date safety and health information to forest workers based on the following laws and regulations has been verified and found to be complied with Occupational Safety and Health Act, 1994, NADOPOD, 2004.</p> <p>Through Social Impact Assessment consultations, information on social impact of forest plantation management operations directly affecting the communities, and the people and groups had been evaluated and incorporated into the EIA.</p> <p>Consultation with members of the neighboring long houses visited confirmed that the FPMU operations did not in any way affect their legal or customary rights, property, resources or livelihoods.</p>	<p>dated 14/01/2018 has prevents the person from following his normal occupation for more than four calendar days. Therefore, Major NCR LYD-02/2018 for Indicator 4.2.4 has been raised.</p> <p>The management could enhance safety awareness for workers at chemical mixing room by displaying PPE pictogram such as gloves, respirator, apron, safety boots, etc. Therefore, an OFI for Indicator 4.2.5 was raised</p>
<p>Principle 5 Benefits From the Forest</p>	<p>For 2018, investments and reinvestments has been made by Kejin Long Lama FPMU in the Nursery, Land Preparation, Planting, Tree Maintainence & Silviculture, Harvesting, Road Construction & Maintainence, Estate(General), Monitoring, Certification, Health & Safety, New Scientific and Technical Information and Corporate Social Responsibility as documented in the Para B. Annual Budget (10 years budget of Long Lama) of the “Annual Work Plan & Budget for Shin Yang Forestry Sdn Bhd. Long Lama Estate (1st Jan – 31st December 2018).</p> <p>The budget enabled provision and management made by the FPMU management to maintain, restore or enhance the productive capacity and</p>	<p>There were no negative findings</p>

	<p>ecological function of the forest plantation areas</p> <p>The main product extracted from the Kejin Long Lama FPMU LPF0017 was logs. The harvesting processes were in accordance with RIL guidelines, Permit to Harvest Coupe (PHC), General harvesting plans, and Detail Harvesting Plan were presented.</p> <p>All trees with diameter of 10 cm and above would be harvested and transported to the mill. Large branches would also be used in the mill leaving only branches with diameters smaller than 10 cm as woody residues for soil improvement. Small trees with diameter size 10 cm below which represented only a small portion would be cut and also left for soil protection.</p> <p>Riparian buffers, Slopes more than 35 degrees (Terrain Class IV) and Watershed Protection areas were excluded from logging and demarcated on the ground and mapped.</p> <p>Sensitive areas for protection in the Kejin Long Lama FPMU were identified and protected following implementation of the SOP and Guidelines i.e.</p> <p>1.(SYF/MC&I/P.06) Identification, demarcation, Mapping and Conservation 2.(SYF/MC&I/P.11) Conservation of Genetic, Species and Ecosystem Biodiversity.</p> <p>Maps showing sensitive areas such as riparian reserves and slopes more than 35 degrees (Terrain Class IV) were available in the FPMP.</p> <p>The rate of harvest for LPF/0017 had been stated in the FPMP. The Annual Allowable Cut (AAC) would be</p>	
--	---	--

	controlled based on the approved area by the Forest Department Sarawak with no activities allowed within protected areas.	
Principle 6 Environmental Impact	<p>Shin Yang FPMU (Kejin Long Lama LPF0017 FPMU) management had continued to conserve biological diversity and its associated values, water resources, soils, unique and fragile ecosystems and landscapes, in line with the aim to maintain the ecological functions and the integrity of the forest.</p> <p>The EIA report had indicated an absence of endangered, rare and threatened species of flora and fauna within the plantation area owing to the intensity of logging conducted. Chapter 7 of the FPMP had incorporated measures to mitigate environmental impacts. These included water quality, fertilizer application, riparian buffer, socio-economic aspects, domestic waste, health and safety and pest and diseases.</p> <p>Guidelines and SOPs for <i>Protection of natural forest, Procedure for Identifying and Demarcation Sensitive Areas for the Protection of Soil and Water, 1999, Guidelines for Identification and Management of Protection Area Rev no 01</i> and SYF / MC & I / P.11 <i>Guidelines for the Conservation of Genetic, Species and Ecological Diversity</i> 1 April 2015 were available.</p> <p>The monthly patrolling and monitoring had also included the documentation of any illegal activities occurring within the plantation area. Signage and posters had been posted at the main entrance and office. Signs prohibiting hunting were also erected at</p>	Construction of log bridge did not follow the Procedure and guidelines for road layout, construction and maintenance. Therefore, a Minor NCR MRS 01/2018 for Indicator 6.5.2 was raised.

	<p>strategic points.</p> <p>Guidelines to demarcate and protect natural forest and measures to enhance natural regeneration was available at FPMU through the revised SOP on; "Conservation of Genetic, Species and Ecosystem Diversity" (SYF/MC&I/P. 11)".</p> <p>The FPMU has established SOP related to waste disposal such as Storage of scheduled waste, Handling of scheduled waste, Labelling of scheduled waste, Scheduled wastes spillage, Removal and disposal of solid waste and Storage, handling and disposal of hazardous goods.</p> <p>The RIL guidelines SYF / MC & I / P.12 <i>Reduced Impact Logging (RIL) Harvesting Operation</i> were adopted by the management of LPF/0017 in harvesting operations. The guidelines contained measures to protect soil from compaction and erosion. These mitigation measures for harvesting were also presented in the EIA and FPMP.</p> <p>There was no application of biological control agents in the FPMU.</p> <p>Operating procedure SYF / MC & I / P.04 Procedure for Preventing, Monitoring and Assessing Invasive Plant Introduction had been written for the control of exotic species.</p> <p>Management had recorded all the exotic species established within the FPMU. The exotic species established within the FPMU were <i>Paraserianthes falcataria</i>, <i>Acacia mangium</i>, <i>Eucalyptus pellita</i> and <i>Eucalyptus deglupta</i>.</p>	
--	---	--

<p>Principle 7 Management Plan</p>	<p>Current Forest Plantation Management Plan LPF0017 Kejin Long Lama FPMU (Rev. 005: January 2014 - December 2023) was revised on 26 June 2018 was made available for the audit process. The FPMP had included all the management objectives as well as providing the items (a) to (i) of the criterion. It had also included the relevant existing guidelines and provisions listed in Principle 1.</p> <p>The latest revision of <i>Forest Plantation Management Plan Revision LPF0017 Kejin Long Lama FPMU</i> was made on 26 June 2018. It had included the results and research findings from PSPs on growth and yield, determination of annual allowable cuts and social impact audit of the local communities.</p>	<p>The FPMU has trained their workers as per respective roles in the implementation of the forest plantation management plan. However, training on pest & disease yet to be conducted. Thus, an OFI for Indicator 7.3.2 was raised.</p>
<p>Principle 8 Monitoring and Assessment</p>	<p>A total of eight (8) PSPs had been established and maintained by the PSP team in the FPMU consisting of five (5) <i>Paraserianthes falcataria</i>, two (2) <i>Acacia mangium</i> and one (1) <i>Eucalyptus pellita</i>.</p> <p>Forest plantation managers had gathered the relevant information, appropriate to the scale and intensity of the forest plantation management for the indicators a-e.</p> <p>The procedure for the control of log movement from the forest to the log pond had been developed as in SYF / MC & I / P.03 <i>Procedure for Chain of Custody</i> to identify all forest products leaving the planted area in the block to Hollystone Weighbridge at Batu Gading, Long Lama.</p> <p>The revised <i>Forest Plantation Management Plan Revision LPF0017 Kejin Long Lama FPMU (Rev. 005: January 2014 - December 2023)</i> had</p>	<p>There was no evidence on social monitoring (the impact from forest plantation operations) was found for Jan- Dec 2018 as per SOP titled 'SYF/MC&I/P.05 <i>Procedure for Monitor Social, Ecological, Environmental and Economic Impacts Rev. 1</i>' dated 6/06/2015. Therefore a Minor NCR against Indicator 8.1.2 (LYD/04/2018) was raised.</p>

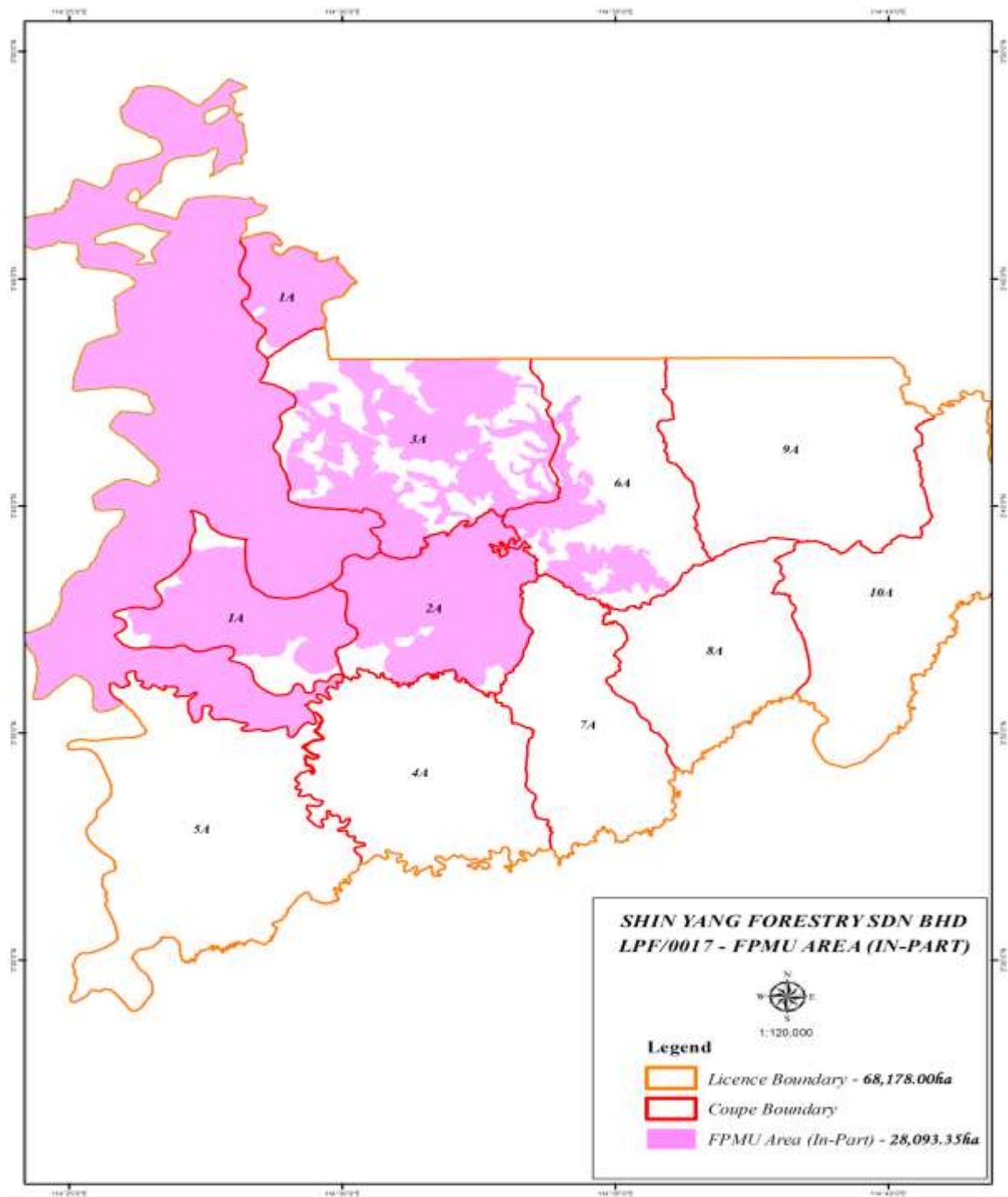
	<p>incorporated the latest results and findings of the monitoring activities of growth data, PSPs, and SIA.</p> <p>A summary of the data obtained from the monitoring i.e. results of growth data from PSPs, SIA (Social Impact Assessment) and Environmental impacts of forest plantation operations had been incorporated into the public summary provided by the website: www.shinyang.com.my</p>	
<p>Principle 9 Maintenance of High Conservation Value (HCV)</p>	<p>Kejin Long lama FPMU had engaged Ecosol Consultant Sdn Bhd to conduct a High Conservation Value Forest (HCVFs) Assessment of the LPF0017 licensed area for the proposed programme for the Endorsement of Forest Certification. A report entitled "High Conservation Value Forest (HCVFs) Assessment of the LPF0017 licensed area for the proposed programme for the Endorsement of Forest Certification" dated September 2015 on the HCVFs assessment was presented to the auditor.</p> <p>Updated list of stakeholders (SYF/MC&I/F/SH.01 and SYF/MC&I/F/SH.02) consulted was also available and verified. Records of consultations with relevant stakeholders and experts were also available.</p> <p>The HCV areas had been mapped and incorporated progressively into the Forest Plantation Management Plan as well as demarcated on the ground.</p> <p>The public summary of the forest plantation management plan available in the website (www.shinyang.com.my) included HCV attributes maintenance/enhancing</p>	<p>There were no negative findings</p>

	<p>measures. In the updated public summary, the different HCVF sites had been identified and management practices prescribed.</p> <p>Monitoring procedures and records to assess the effectiveness of the measures in the management of the HCV area were available at the Kejin Long Lama LPF/0017 FPMU base camp. Forest Patrol record showed that annual monitoring had been conducted on the identified HCVF sites.</p> <p>The results of annual monitoring of the HCV attributes identified in the HCV report were presented and made available in the public summary in the website: www.shinyang.com.my.</p>	
<p>Principle 10 Forest Plantation Development and Management</p>	<p>The plantation management plan had clearly implemented the forest management objectives, including natural forest conservation and restoration objectives. Residual natural forests represented by Terrain IV, water catchment, river buffer, salt licks and other HCV areas are protected and managed as per Forest Plantation Management Plan objectives.</p> <p>The extent of area planted by each species and by age classes and maps depicting the spatial distribution of the planted species made available as refer to Map D: LPF0017 Kejin Long Lama FPMU – Planting Pattern for the FPMU Area.</p> <p>A description of the soil types within the FPMU was presented in Section 1.4.1.2 of the revised <i>Forest Plantation Management Plan Revision LPF0017 Kejin Long Lama FPMU</i>.</p>	<p>There were no negative findings</p>

	<p>There are 28 PSPs established within the plantation. Nine (9) of the PSPs were of <i>Acacia mangium</i>, eleven (11) on <i>Paraserianthes falcataria</i>, two (2) on <i>Eucalyptus pellita</i>, one (1) on <i>Terminalia</i> and five (5) for <i>Hevea brasiliensis</i></p> <p>The FPMU has conducted data analysis for the PSPs data (2017-2018) as reported in November 2018 such as survival rate, mean DBH, mean height, mean basal area, mean volume, mean annual increment volume, DBH growth and height growth.</p> <p>Documentation and maps depicting areas managed as natural forest in the forest plantation areas were available in the FPMP Chapter 11- Identification and Management of Protection/HCV Areas entitled "Map of Protected and HCV Areas within Kejin FPMU".</p> <p>Management had established procedures in accordance to <i>Guidelines for forest road layout, construction and maintenance</i> of the Forest Department. The RIL guidelines had been adopted in the FPMU as shown in the SOP SYF / MC & I / P.12 <i>Reduced Impact Logging (RIL) Harvesting Operation</i> in harvesting operations to protect soil from compaction and erosion.</p> <p>The FPMU has established a guidelines and/or SOP for pest control and disease management practices as stated in the SYF/MC&I/P.23 SOP for Pest Control and Disease Management Practices, including Forest Hygiene Practices and Biological Control Methods, and Tree Plantation Manual</p>	
--	--	--

	<p>Ed 02, August 2018.</p> <p>The chemical usage in the nursery including fertilizers, fungicides and insecticides was recorded in the Chemical Monthly Usage for LPF0017 for January to November 2018. No biological agents were used in the plantation.</p> <p>The nursery and field trials, including provenance trials, of selected species for forest plantation can be seen in the reports of the Planted Forest Research Programmes between Sarawak Forestry Corporation and Shin Yang Forestry Sdn Bhd (Progress Review June 2018).</p>	
--	---	--

Map of Kejin Long Lama FPMU



Details of Auditors and Qualification

Assessment Team	Role/Area of MC&I Requirement	Qualification and Experience
Mohd Razman Salim	Assessment Team Leader / Forester	<p>Academic Qualification: B.Sc of Forestry (Forest Production), University Putra Malaysia.</p> <p>Work Experience: Five years experienced as Research Officer at the Forest Research Institute Malaysia (FRIM) since 2007 in a various area such as ecological research for lowland and hill dipterocarp forest, Geographic Information Systems, forest inventories, forest harvesting and forest management system (SMS). Participate in organizing committee member, division level activities and projects. Coordinate and collaborate a long term ecological plot and inventory data about 25 years at the Pasoh, Negeri Sembilan with Negeri Sembilan Forestry Department, universities (local & international) and NGOs. Published and presented research findings at the seminars and conferences. Currently as Auditor at the Food, Agriculture and Forestry Section (FAF), SIRIM QAS International Sdn Bhd, since 2013. Involved in conducting assessments on forest management certification [MC&I (Natural Forest)] & [MC&I (Plantations)], MYNI of RSPO P&C and other management systems on ISO 9001, 14001 and OHSAS 18001</p> <p>Training / Research Areas: Was attending and pass in the following training programmes: Auditor Training Course on Malaysian Criteria and Indicators for Forest Management Certification [MC&I (Natural Forest)] & [MC&I (Plantations)] organized by MTCC, 1-4 December 2013.</p> <ul style="list-style-type: none"> • EMS 14001: 2004 Lead Auditor Course organized by SIRIM Training Services Sdn Bhd, 18-22 March 2013. • OHSAS 18001: 2007 Lead Auditor Course organized by SIRIM Training Services Sdn Bhd, 11-15 March 2013. • QMS 9001: 2008 Lead Auditor Course organized by SIRIM Training Services Sdn Bhd, 4-8 March 2013.
Ismail Adnan Malek	Assessment Team Member / Forester	<p>Academic Qualification: Master of Forestry, University of British Columbia, Canada</p> <p>Work Experience: One year (1974-1975) experience as Sub Assistant Conservator of Forest at the Pahang Forest Department, involved with Forest Administration/Management and Enforcement. Next, seven years (1979-1986) experience as Forest Officer/Logging Superintendent at Syarikat Jengka Sdn. Bhd (SJSB), an integrated timber complex in Pahang. Responsible for Forest Licensing/ Administration, Forest Mapping, Road Construction and Logging Operations. Senior Lecturer at the Forestry Faculty, Universiti Putra Malaysia (UPM) from 1986 to 2014. Responsible for teaching and research in Forest Mensuration, Forest Survey, Forest Road, GIS/Remote Sensing and Forest Mapping. Responsible for academic supervision of more than 100 Bachelor/Master/Phd students in their research and thesis writing. Own research at UPM include various areas such as forest mapping using geo spatial tools, forest inventories, forest harvesting and forest management system (SMS). Also involved with consultancy works which include RPH development and Forest Mapping. Participate in organizing local/international seminars on Forestry areas. Published and</p>

		<p>presented research findings at seminars/conferences and journals. Currently as Auditor at the Food, Agriculture and Forestry /ion (FAF), SIRIM QAS International Sdn Bhd, since 2016. Involved in conducting assessments on forest management certification MC&I (Natural Forest) & MC&I (Forest Plantations).</p> <p>Training / Research Areas:</p> <ul style="list-style-type: none"> • Auditor Training Course on MC& I (Natural Forest) and MC&I (Forest Plantation V2), 9th-10th July 2015, SIRIM QAS International Sdn Bhd • ISO 14001:2004 Lead Assessor Training, 23rd-27th Nov 2015, SIRIM Training Services Sdn. Bhd • Training on Auditing Techniques, 26th January 2016, SIRIM QAS International Sdn Bhd
Puteri Arlydia Abdul	Assessment Team Member / Forester	<p>Academic Qualification: B.Sc of Forestry (Forest Production), University Putra Malaysia.</p> <p>Work Experience: 1 year with Forestry Department Peninsular Malaysia (JPSM) 2007-2008, 3 years with Forest Plantation Development Sdn Bhd (Wholly owned by MTIB) 2008 – 2011, 1 year with Transparency International Malaysia 2011-2012, 3 years with Intertek Certification International Sdn Bhd 2012-2015 and with Sirim QAS International from 2015 onwards. Her working experience cover forest elements among others, Geographic Information System, Remote Sensing, Forest Governance Integrity and Local Communities programs and auditing in ISO 9001 (Quality), ISO 14001 (Environment), PEFC Chain of Custody and PEFC MC&I (both Natural and Plantation Forest).</p> <p>Training / Research Areas: Was attending and pass in the following training programmes:</p> <ol style="list-style-type: none"> 1. ISO 9001: 2008 Lead Auditor Course dated 19-23/03/2012 2. MC&I (Natural and Plantation) Lead Auditor Course 9-10/07/2015 3. Training on ISO 9001:2015 (final version) dated 21/09/2015 4. ISO 14001: 2004 Lead Auditor Course dated 18-22/05/2015 5. Aspect and Impact Mitigation and Environmental Laws dated 27/05/2016 6. Schedule Waste Handling dated 1/06/2016 7. ISO 14001:2015 dated 18/09/2017 8. PEFC CoC by MTCC dated 6 & 14/12/2017

Comment by Stakeholders and Responses from Audit Team

No.	Stakeholder	Comments/Issues Raised	Response by Audit Team
1	National Resource Environment Board (NREB)	The plantation to clearly demarcate the HCV areas such as water catchment area, steep terrain / slopes and other environmental sensitive areas which shall be conserved.	The FPMU has demarcated and protected environmental sensitive areas as verified during site visit such as water catchment area at Sg. Temala, river buffer at Sg. Temala and Sg. Sengayan, steep terrain area and HCV saltlick area.

Surveillance 2 Audit Plan

DAY	TIME	PROGRAM		
		AUDITOR 1 (Razman)	AUDITOR 2 (Ismail Adnan)	AUDITOR 3 (Puteri Arlydia)
Day 0 2 Dec 2018 (Sun)		<ul style="list-style-type: none"> All auditors travelling from KLIA to Miri Flight: MAS - MH2574 (1130 - 1345) Travel to Kejin base camp 		
Day 1 3 Dec 2018 (Mon)	8.30 – 9.30 am	<ul style="list-style-type: none"> Opening Meeting with representatives of FPMU Briefing session by Forest Manager of the FPMU Q&A Session Follow up on previous audit findings Check on complaints, stakeholder comments and follow-up actions (if any) <ul style="list-style-type: none"> Local Communities Government agencies NGOs 		
	9.30 am – 5.00 pm	Documentation and records review: <ul style="list-style-type: none"> Principle 6 – Environmental Impact Principle 7 – Management Plan Principle 10 - Forest Plantation Development and Management 	Documentation and records review: <ul style="list-style-type: none"> Principle 1 – Compliance with Laws and Principles Principle 5 – Benefits from the forest Principle 8 – Monitoring and Assessment Principle 9 – Maintenance of High Conservation Value (HCV) 	Documentation and records review: <ul style="list-style-type: none"> Principle 2 – Tenure and Use Rights and Responsibilities Principle 3 – Indigenous Peoples' Right Principle 4 - Community Relations and Worker's Right
		<ul style="list-style-type: none"> Review of Day 1 Findings by Audit Team Leader 		
Day 2 4 Dec 2018 (Tue)	8.00 am – 12.00 pm	Site visit: <ul style="list-style-type: none"> Inspection area 1.Planting area at Block 56, Coupe 03A 2.Harvesting area – Block 6, Coupe 03A 3.Silviculture operations (planting, weeding, slashing, pruning, chemical spraying, etc.) at Block 56, Coupe 03A 4.River buffer at harvesting area - Block 6, Coupe 03A 5.Management of forest fire 6.Verification on CoC process for certified and uncertified logs 	Site visit: <ul style="list-style-type: none"> Inspection of coupe boundary at Coupe 03A Water catchment area at Sg. Temala River buffer at Sg. Temala and Sg. Sengayan Steep terrain area at Block 30, Block 02A HCV – saltlick area at Coupe 03A Permanent sample plots (PSPs) at Block 48, Coupe 03A – No. 15. 	Site visit: <ul style="list-style-type: none"> Consultation with local communities located adjacent to FPMU 1. Long Tepen Interview with workers – union, insurance, payslip, medical & accident, training etc
	2.00 – 4.00 pm			Site visit <ul style="list-style-type: none"> Nursery Workshop Scheduled waste store Genset area
	4.00 – 5.00 pm	<ul style="list-style-type: none"> Documentation and records review Preparation of audit report and finding Closing meeting 		
	6.00 pm	<ul style="list-style-type: none"> Travel to Miri Check-in at Pullman Miri Waterfront. 		
All Auditors travel back to Kuala Lumpur on 5 Nov 2018, Flight: AirAsia (0950 – 1205)				

Surveillance 2 Audit Findings and Corrective Action Taken

Indicator	Specification Major/Minor/OFI	Detail Non-conformances	Corrective Action Taken	Verification by Assessor
<p>Indicator 4.1.1</p> <p>NCR #: LYD 01/2018</p>	<p>Minor</p>	<p>Indicator 4.1.1 - Forest plantation managers provide, where appropriate, support for training, retraining, local infrastructure, facilities and social programmes commensurate with the scale and intensity of forest plantation management operations.</p> <ul style="list-style-type: none"> • Environmental Quality (Amendment) Act 2012 49a. (I) An owner or occupier of a premise shall employ a person who has been certified by the Director General as a competent person to conduct all or any of the following activities: (b) the management of scheduled wastes. <p>Finding: Person incharge for scheduled waste found to be incompetent to ensure that scheduled waste within certified FPMU areas is managed properly in accordance with the legal requirement.</p> <p>Objective evidence: Person incharge for scheduled waste found to be incompetent to ensure that scheduled waste within certified FPMU areas is managed properly in accordance with the legal requirement whereby:</p> <ol style="list-style-type: none"> 1. No record to show the person incharge has attended Course on Certified Environmental Professional in Schedule Waste Management (CePSWaM) 2. Interview with person incharge and workers at workshop, 	<p>The person in-charge will be send for course on Certified Environmental Professional in Scheduled Waste Management (CePSWaM) by October 2019.</p> <p>All the workers at workshop, nursery and store (chemical, oil, genset) will be re-training by the internal trainer by November 2019.</p>	<p>On 4/1/2019 FPMU has justified that the previous schedule waste management has been manage together by their branch (Shin Yang Plywood Miri Sdn Bhd).</p> <p>During the transition the briefing has been given to the new person incharge hence the understanding is insufficient.</p> <p>FPMU has planned to send person incharge for Course on Certified Environmental Professional in Schedule Waste Management (CePSWaM) on October 2019.</p> <p>Status: This action plan is accepted by the auditor and will be verified during next audit.</p>

		<p>nursery, store (chemical, oil, genset etc) show they were not aware of:</p> <ol style="list-style-type: none"> a. Regulation 3. Notification of the generation of scheduled wastes b. Regulation 4. Disposal of scheduled wastes c. Regulation 8. Responsibility of waste generator d. Regulation 9. Storage of scheduled wastes e. Regulation 10. Labelling of scheduled wastes f. Regulation 11. Waste generator shall keep an inventory of scheduled wastes g. Regulation 12. Information to be provided by waste generator, contractor and occupier of prescribed premises h. Regulation 13. Scheduled wastes transported outside waste generator's premises to be accompanied by information i. Regulation 14. Spill or accidental discharge 		
<p>Indicator 4.2.4</p> <p>NCR #: LYD 02/2018</p>	<p>Major</p>	<p>Indicator 4.2.4 - Forest plantation managers shall maintain up-to-date safety records in compliance with all applicable laws and/or regulations covering health and safety of forest plantation workers.</p> <p>P.U.(A) 128/2004 Occupational Safety And Health (Notification Of Accident, Dangerous Occurrence, Occupational Poisoning And Occupational Disease) Regulations 2004 Regulation 5. Notification and reporting of accident and dangerous occurrence. (2) Whenever any accident arising out of or in connection with work which causes bodily injury to any person which prevents the person from following his normal occupation for more than four calendar days, the employer shall, within 7</p>	<p>On 4/01/2019 the FPMU has justified that the SHO are not fully understand the respective regulation and has missed to communicated with FPMU HQ on the accident. FPMU has planned to report the accident to DOSH by 30/01/2019 and retrain SHO as preventive action.</p>	<p>The FPMU has conducted training on accident investigation and reporting using JKKP 6 form to plantation officers and staff on 4 February 2019.</p> <p>The accident report also has been sent to DOSH using online system – MyKKP on 4 January 2019.</p> <p>Status: Closed</p>

		<p>days, send a report thereof in an approved form to the Department of Occupational Safety and Health office.</p> <p>Finding: The employer has not, within 7 days, send a report thereof in an approved form to the Department of Occupational Safety and Health office on accident dated 14/01/2018 has prevents the person from following his normal occupation for more than four calendar days.</p> <p>Objective evidence: There is no record found as an evidence that FPMU has sent, within 7 days, a report thereof in an approved form to the Department of Occupational Safety and Health office on accident dated 14/01/2018 on Mr Mahmuroji Storekeeper Assistant prevents the person from following his normal occupation for more than four calendar days; for this case 14 days</p>		
<p>Indicator 6.5.2</p> <p>NCR #: MRS 01/2018</p>	<p>Minor</p>	<p>Indicator 6.5.2 – Availability and implementation of guidelines for forest road lay-out and construction, including log landings and drainage requirements.</p> <p>Finding : Construction of log bridge did not follow the Procedure and guidelines for road layout, construction and maintenance</p> <p>Objective evidence : Log bridge structure at harvesting area (Block 6, Coupe 03A) did not have guard rails to avoid debris or soil on the bridge falling directly into the river or waterways.</p>	<p>Training on the procedure and guidelines for road layout, construction and maintenance to the logging team.</p> <p>Guard rails will be install by 23/03/2019.</p>	<p>On 4/01/2019 the FPMU has justified that logging team was lack of understanding on the relevant procedure on log bridge construction.</p> <p>FPMU has planned to re-train on the procedure and to install the guard rail by 23 March 2019.</p> <p>Status: Action plan has been accepted by the auditor. Effectiveness of corrective action taken will be verified during next audit.</p>
<p>Indicator 6.7.1</p> <p>NCR #: LYD</p>	<p>Major</p>	<p>Indicator 6.7.1 – Oil, fuel, containers, liquid and solid non-organic wastes, shall be disposed of in an environmentally appropriate</p>	<p>On 4/1/2019 FPMU has justified that the previous scheduled waste management has been manage</p>	<p>Audit team has received, review and accepted all the evidences given on 12 April 2019 as below:</p>

03/2018		<p>and legal manner</p> <ul style="list-style-type: none"> • Environmental Quality (Amendment) Act 2012 Second Schedule (Regulation 3) Notification Of Scheduled Wastes And Fifth Schedule (Regulation 11) Inventory Of Scheduled Wastes • Environmental Quality Act 1974 Environmental Quality (Scheduled Wastes) Regulations 2005 stipulated under Clause 9(5) that; <i>Any person may store scheduled wastes generated by him for 180 days or less after its generation provided that – (a) the quantity of scheduled wastes accumulated on site shall not exceed 20 metric tonnes</i> <p>Finding: Disposal of oil, fuel, containers, liquid and solid non-organic wastes was not conducted in an environmentally appropriate and legal manner</p> <p>Objective evidence: Upgrading from previous Minor NCR LYD-06/2017</p> <ol style="list-style-type: none"> 1. Second Schedule (Regulation 3) Notification of Scheduled Wastes and Fifth Schedule (Regulation 11) Inventory of Scheduled Wastes has not been made available during audit. 2. Records inventory (Fifth Schedule) and Disposal (Seventh Schedule) for the followings were not available during audit: <ol style="list-style-type: none"> 1) It has been found out that during site visit to schedule waste store the following has exceed 180 days: <ul style="list-style-type: none"> • SW 410 (contaminated filter and cotton rags) 1 drum since 15/01/2017 • SW 306 (used hydraulic oil) 1 drum since 15/01/2017 • SW 305 (spent lubricant oil) 7 drum since 	<p>together by their branch (Shin Yang Plywood Miri Sdn Bhd). During the transition some records found to be missing.</p> <p>FPMU has planned to resubmit to DOE under their own registration / record and updated all record accordingly on 27/02/2019.</p> <p>For the scheduled waste that has not yet been disposed, FPMU has planned to resolve the matter by 29/01/2019.</p>	<p>The FPMU has notified DOE for all scheduled wastes on 5 March 2019 as per Second Schedule through Electronic Scheduled Waste Information System (eSWIS).</p> <p>Inventory of Scheduled Wastes (Fifth Schedule) for March 2019 has been registered through Electronic Scheduled Waste Information System (eSWIS) on 7 March 2019.</p> <p>The FPMU has appointed a license contractor, E-Concern (M) Sdn Bhd on 18/3/2019 to collect all scheduled waste such as SW102 (used battery), SW305 (spent lubricant oil), SW306 (used hydraulic oil) & SW410 (contaminated filter and cotton rags) as per Seventh Schedule.</p> <p>Status: Closed</p>
---------	--	---	---	---

		15/01/2017 2) The following has not been identified in Second Schedule as scheduled waste and no evidence showing it has been disposed as per scheduled waste requirement: <ul style="list-style-type: none"> • SW 416 (disposed paints container) • SW 409 (Disposed containers contaminated with chemicals & pesticides) 		
Indicator 8.1.2 NCR #: LYD 04/2018	Minor	Indicator 8.1.2 forest plantation managers shall identify and implement appropriate monitoring procedures, in accordance with the scale and the intensity of the forest plantation management operations, for assessing social, ecological, environmental and economic impacts Finding: The evidence on social monitoring (the impact from forest plantation operations) was not available. Objective evidence: The evidence on social monitoring (the impact from forest plantation operations) has not been found for Jan-Dec 2018 as per SYF/MC&I/P.05 Procedure for Monitor Social, Ecological, Environmental and Economic Impacts Rev. 1 dated 6/06/2015.	The FPMU will be re-training on the procedure and the social monitoring will be carried out again by the FPMU Corporate Community Relations Team by May 2019.	On 4/01/2019 the FPMU has justified that they have conducted on consultation but due to lack of understanding the records are not in placed. FPMU has planned to re-train on the procedure and to carry out another social monitoring by May 2019. Status: Action plan has been accepted by the auditor. Effectiveness of corrective action taken will be verified during next audit.
Indicator 4.2.5 OFI #: 1	OFI	<u>Demarcation of hazardous areas and provision of guidelines for storage and handling of hazardous materials.</u> The management could enhance safety awareness among workers at the chemical mixing room by displaying PPE pictograms such as gloves, respirator, apron, safety boots, etc.	Not required.	Verify during next audit.

<p>Indicator 7.3.2</p> <p>OFI #: 2</p>	<p>OFI</p>	<p><u>Forest plantation workers shall be trained as to their respective roles in the implementation of the forest plantation management plan.</u></p> <p>The FPMU has trained workers in their respective roles in the implementation of the forest plantation management plan. However, training on pest & disease has yet to be conducted.</p>	<p>Not required.</p>	<p>Verify during next audit.</p>
<p>Indicator 7.4.1</p> <p>OFI #: 3</p>	<p>OFI</p>	<p><u>A summary of the primary elements of the forest plantation management plan as prepared and implemented under Indicator 7.1.1 shall be made publicly available.</u></p> <p>The Annual Allowable Area (ACA) stated in the Kejin FPMU website is 1,018.60 ha/year but not reflected in the revised FPMP (rev. 005 Dec 2014 – Dec 2023) which stated 727.57 ha/year.</p>	<p>Not required.</p>	<p>Verify during next audit.</p>

Verification on Previous Surveillance 1 Audit Findings and Action Taken

Indicator	Specification Major/Minor/OFI	Detail Non-conformances	Corrective Action Taken	Verification by Assessor
Indicator 1.3.1 NCR #: LYD 01/2017	Minor	<p>Indicator 1.3.1 - Forest plantations managers are aware of international agreements binding to Malaysia relevant to forest plantation management.</p> <p>Finding: Forest plantations managers had not demonstrated adequately awareness of international agreements binding to Malaysia relevant to forest plantation management.</p> <p>Objective evidence: Upgraded from previous OFI.</p> <p>Based on interviews conducted during this surveillance the field managers were not fully aware of international agreements binding to Malaysia relevant to forest plantation such as CITES, ILO Conventions, ITTA and Convention on Biological Diversity.</p>	Training on International Agreements Binding to Malaysia relevant to forest plantation will be given to the field manager by 26/1/2018.	<p>Training on International Agreements Binding to Malaysia relevant to forest plantation field managers was conducted on 26/1/2018 as verified through training record and attendance list.</p> <p>Based on interview with field managers (Mr. Luk Toh Chuan and Mr. Danny Roben), they are aware on the International Agreements Binding to Malaysia.</p> <p>Status: Closed</p>
Indicator 3.1.3 NCR #: LYD 02/2017	Minor	<p>Indicator 3.1.3 - Availability of appropriate mechanisms to resolve any conflicts and grievances between parties involved.</p> <p>Finding: Appropriate mechanisms to resolve any conflicts and grievances between parties involved had not been implemented adequately.</p> <p>Objective evidence: Upgraded from previous OFI.</p> <p>The FPMU had established procedure SYF/MC&I/P.09 Mechanism to Resolve Local Communities Issues Rev 3 dated 22/09/2015. It was stated in the Liaison Committee Document that controller would fill Aduan</p>	Training on the procedure of Mechanism to resolve Local Communities Issues will be given to the Liaison Committee Document Controller by 12/1/2018.	<p>During current audit, the previous details have been incorporated as per further investigation conducted by FPMU. Interview with personnel has confirm a briefing has been given on the proper usage of the form on 12/1/2018. Corrective action taken found to be effective with no repetition of nonconformities found during current audit, thus, previous Minor NCR LYD-02/2017 has been accepted for closed accordingly.</p> <p>Status: Closed</p>

		<p>form (SYF/MC&I/G.01) and Penyelesaian form (SYF/MC&I/G.01) as evidence of implementation of the mechanism.</p> <p>Some of the Local Communities Issues were in the middle of meditation/resolution, the records/evidence of resolution for the following cases were not in placed as per procedure:</p> <p>1.24/7/2015 Long Tepen request for logs commission (compensation) for all natural and planted logs within their area Coupe 8 (non-certified MC&I) and Coupe 2 (certified MC&I)</p> <p>2.10/8/2015 Long Tepen requested logs commission (compensation) for the area of Sg. Temala Musang, Sg. Lunyang, Sg. Sengayan, Sg. Jenuing, Sg. Punau, Sg. Andong for Coupe 4, 5, 8 (non-certified MC&I) and Coupe 6 (non-certified MC&I).</p>		
<p>Indicator 4.2.2</p> <p>NCR #: SK 01/2017</p>	Minor	<p>Indicator 4.2.2 - Availability of management policies addressing the occupational safety and health of forest plantation workers and their families with current legislation and/or regulations.</p> <p>Finding: The frequency of Safety and Health Committee meeting did not follow the specification of Department of Safety and Health.</p> <p>Objective evidence: A safety and health committee was formed and 3 meetings were held in 2017. These were on 27 march, 19 June, 12 September 2017. Only two similar meetings were conducted in 5 March and 13 June 2016. The number of meetings conducted in 2016 did not follow the specification of DOSH.</p>	<p>Training on Occupational Safety and Health (Safety and Helath Committee) Reg will be given to all Safety Committee meeting for year 2017 will be held on 29/1/2017.</p>	<p>Safety Meeting has been held on 29/12/2017, 30/03/2018, 29/06/2018 and 28/09/2018.</p> <p>Status: Closed.</p>
Indicator 4.2.3	Minor	<p>Indicator 4.2.3 - Appropriate safety and operational equipment in good working</p>	<p>The current safety and operational equipment especially sprayer will</p>	<p>During current audit, it has been observed that sprayer used</p>

<p>NCR #: LYD 03/2017</p>		<p>condition, including operational procedures, shall be made available to forest plantation workers in the work place.</p> <p>Finding: Appropriate safety and operational equipment were not in good working condition.</p> <p>Objective evidence: The safety and operational equipment for the sprayer was not in good working condition as it was observed to be torn.</p>	<p>be replaced with new one and checklist of Safety and operational equipment maintenance will be establish to make sure the equipment in good condition all the time by 12/1/2018.</p>	<p>adequate sprayer coat and all PPE found to be in a good condition. Record on PPE shows that all PPE has been replaced accordingly on 28/08/2018, 4/09/2018 and 9/09/2018 for sprayer coat/apron, safety goggles, face mask, rubber boots etc.</p> <p>Status: Closed.</p>
<p>Indicator 4.2.5</p> <p>NCR #: LYD 04/2017</p>	<p>Minor</p>	<p>Indicator 4.2.5 - Demarcation of hazardous areas and provision of guidelines for storage and handling of hazardous materials.</p> <p>Finding: Provision of guidelines for storage and handling of hazardous materials were not in placed.</p> <p>Objective evidence: Provision of guidelines for storage and handling of hazardous materials had not been effectively maintained at Chemical Store. It was noted that all chemicals used in the nursery were not been placed with secondary containment to prevent spillage during handling and to prevent leakage of the container.</p>	<p>Training on the guideline for storage and handling of hazardous materials will be given to nursery-in-charge and workers. All chemicals used in the nursery will be provided with secondary containment by 5/1/2017.</p>	<p>During current audit, it has been observed and verified at Chemical Store, Schedule Waste Store and Workshop that demarcation and handling of hazardous material found to be adequate as per legal requirement.</p> <p>Secondary containment has been placed to prevent direct leakage to the ground and spillage kit also has been provided at respective area accordingly. Corrective action taken found to be effective with no repetition of nonconformities found during current audit,</p> <p>Status: Closed.</p>
<p>Indicator 5.5.1</p> <p>NCR #: SK 02/2017</p>	<p>Minor</p>	<p>Indicator 5.5.1 – Availability and implementation of guidelines and/or procedures to identify and demarcate sensitive areas for the protection of soil and water, watercourses and wetlands in the forest plantation areas.</p> <p>Finding: During the site inspection it was observed that many of the signage for riparian buffer (SBZ) was not present. Steep slopes cleared for planting were exposed to erosion impacts.</p>	<p>The new SBZ signboard will be re-install at Sg. Sengayan and Temala river and the trees along the buffer will be painted using blue color paint by 10/3/2018.</p> <p>Chapter 4: Maintenance of Tree Plantation Manual will be revise and the used of chemical treatment method will limited to certain area only.</p>	<ol style="list-style-type: none"> 1. SBZ signboard at Sg. Sengayan was sighted. Trees along river was painted blue color. 2. 'Maintenance' in the Tree Plantation Manual had been revised and chemical treatment method shall be limited. <p>Status: Closed</p>

		<p>Objective evidence: Inspection conducted on buffer belts (SBZ) along Sengayan and Temala rivers and its tributaries had indicated some of the signs for riparian buffer were not present. Steep slopes along Block 30 in Coupe 2 were exposed to erosion after land clearing and planting owing to the absence of any vegetation cover.</p>		
<p>Indicator 6.1.1 NCR #: SK 03/2017</p>	Major	<p>Indicator 6.1.1 – Assessment of environmental impacts are carried out, including landscape level considerations, as well as the impacts of on-site processing facilities, appropriate to the scale and intensity of forest plantation management, prior to commencement of forest plantation operations in the forest plantation areas.</p> <p>Finding: The report of the EIA had not been updated.</p> <p>Objective evidence: An IA report for the 'Environmental Impact Assessment Report for the Proposed Long Lama Forest Plantation in Long Lama Miri, March 2000 was available. The potential impacts and strategies to mitigate the impacts were written in this document. The EIA for the FMU is however out-dated. It would have to be updated to take into consideration the changes to the environment within and adjacent the FMU since the last 15 years. This was a Minor NCR SM2/2015 raised during the Stage 2 evaluation. The impacts of new plantation activities and additional information gathered within the FPMU had not been included.</p>	<p>The impacts of new plantation activities within the FPMU will be included into current EIA by 16/3/2018.</p>	<p>The FMU has updated the EIA with amendment EIA report dated 8/11/2018.</p> <p>Status: Closed.</p>
<p>Indicator 6.1.2 NCR #: SK 05/2017</p>	Minor	<p>Indicator 6.1.2 – Assessment of environmental impacts are carried out, including the potential impacts on rare, threatened and endangered species of flora and fauna,</p>	<p>The environmental impacts assessment result will be included in the current EIA by 16/3/2018.</p>	<p>The FPMU has updated the EIA with protected flora and fauna in the amendment EIA report dated 8/11/2018.</p>

		<p>and the need for biological corridors in forest plantation areas, appropriate to the scale and intensity of forest plantation management.</p> <p>Finding: Assessment of environmental impacts had been carried out without following the organization SYF/MC&I/P.11 Guidelines of the Conservation of Genetic, Species, and Ecosystem Diversity Rev 1 dated 6/6/2015 requiring the check of all national plans and laws for references to biodiversity conservation needs including IUCN Red List of Threatened Species, Sarawak Plant Red List, A Master Plan for Wildlife in Sarawak 1996 and Wildlife Protection Ordinance 1998.</p> <p>Objective evidence: Upgrade from previous OFI.</p> <p>The EIA had reported the absence of endangered, rare and threatened species of flora and fauna within the plantation area. References to Sarawak Plant Red List and master Plan for wildlife in Sarawak 1996 had been made in the SOP 11. These specifies requirements were not included in the EIA.</p>		Status: Closed.
<p>Indicator 6.7.1</p> <p>NCR #: LYD 06/2017</p>	Minor	<p>Indicator 6.7.1 – Oil, fuel, containers, liquid and solid non-organic wastes, shall be disposed of in an environmentally appropriate and legal manner.</p> <p>Finding: Oil, fuel, containers, liquid and solid non-organic wastes has not been disposed in an environmentally appropriate and legal manner.</p> <p>Objective evidence: 1) Scheduled waste had not been disposed in legal manner as per Environmental Quality Act 1974 Environmental Quality (Scheduled Wastes) Reg 2005</p>	<p>All the current Scheduled waste will be dispose immediately by 19/1/2018.</p> <p>The FPMU will register SW416 & SW409 with DOE by 23/2/2018.</p>	<p>During this Surveillance 2 Audit, audit team has found recurrence of the same issue.</p> <p>Status: Upgraded previous Minor NCR LYD 06/2017 to Major NCR LYD 03/2018. Refer to Appendix IV.</p>

		<p>stipulated under Clause 9(5) that; Any person may store scheduled wastes generated by him for 180 days or less after its generation provided that –</p> <p>(a) the quantity of scheduled wastes accumulated on site shall not exceed 20 metric tonnes. It has been found out that during site visit to schedule waste store the following has exceed 180 days:</p> <ul style="list-style-type: none"> • SW410 (contaminated filter and cotton rags) 1 drum since 15/1/2017 • SW306 (used hydrolic oil) 1 drum since 15/1/2017 • SW305 (spent lubricant oil) 7 drums since 15/1/2017 <p>2) The following had not been identified as scheduled waste and no evidence showing it had been disposed as per scheduled waste requirement:</p> <ul style="list-style-type: none"> • SW416 (Disposed paints container) • SW409 (Disposed containers contaminated with chemicals & pesticides) 		
<p>Indicator 9.4.1</p> <p>NCR #: SK 04/2017</p>	Major	<p>Indicator 9.4.1 - Forest plantation managers shall conduct, appropriate to scale and intensity of forest plantation management, annual monitoring to assess the effectiveness of the measures in the management of the HCV area in forest plantation areas.</p> <p>Finding: Results of annual monitoring of the HCV attributes identified in the HCV report were not presented.</p> <p>Objective evidence: Results of annual monitoring of the HCV attributes identified in the HCV report were not presented or made available in the public summary.</p>	<p>The results of annual monitoring of the HCV will be add into public summary at https://www.shinyang.com.my/products-services/tree-plantation/lpf0017-long-lama-estate.html by 15/3/2018.</p>	<p>The result of annual monitoring of the HCV had been added into the public summary in the website.</p> <p>Status: Closed</p>

<p>Indicator 4.2.4</p> <p>OFI #: 1</p>	<p>OFI</p>	<p><u>Forest plantation managers shall maintain up-to-date safety records in compliance with all applicable laws and/or regulations covering health and safety of forest plantation workers.</u></p> <p>Records from 2013 to August 2017 indicated 11 Minor injuries reported. Two cases were reported in 2013 and 2014, one incidence in 2015 while there were 3 cases in 2016 and 3 cases in the first eight months of 2017.</p>	<p>Not required.</p>	<p>Records of dissemination of up to-date safety and health information to forest workers based on the following laws and regulations has been verified and found to be complied with Occupational Safety and Health Act, 1994, NADOPOD, 2004.</p> <p>Status: Closed.</p>
<p>Indicator 6.6.1</p> <p>OFI #: 2</p>	<p>OFI</p>	<p><u>Availability and implementation of guidelines and/or procedures on the use of chemicals in forest plantation areas approved by relevant regulatory authorities.</u></p> <p>Chemical treatment had been prescribed as pre-treatment prior to plantings of sedlings.</p>	<p>Not required.</p>	<p>Chemical treatment had been prescribed as pre-treatment prior to planting of seedlings as observed during this surveillance. The FPMU has promoted the development and adoption of environmentally non-chemical methods of pest management and strive to avoid use of chemical pesticides. As verified during this Surveillance 2 audit, the FPMU has stated in the SOP Procedure for Chemical Spray – Land Preparation that the usage of chemical pesticides will be minimize and avoid any spillage to reduce environmental impact (pollution).</p> <p>Status: Closed.</p>

- End of Report -