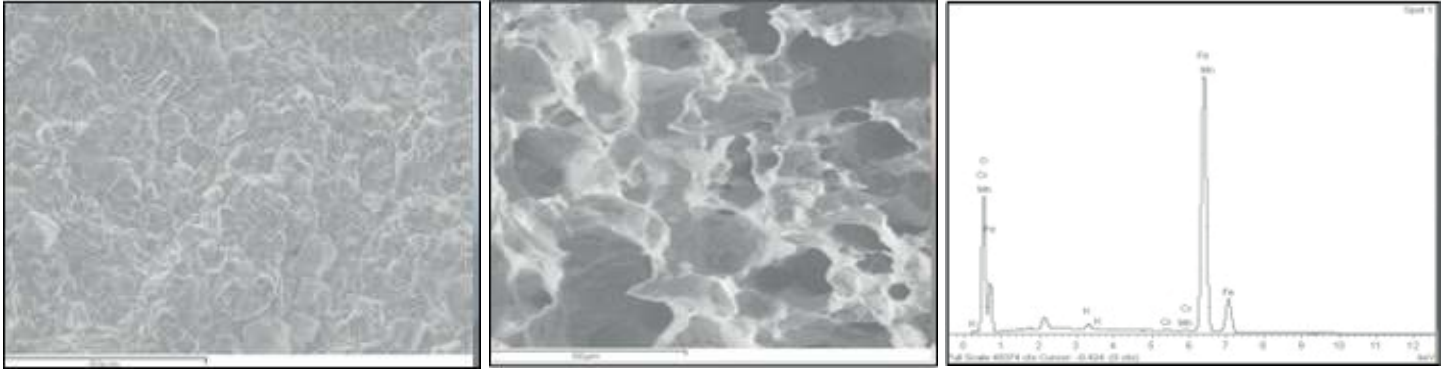




MATERIAL INTEGRITY

TESTING

Scanning Electron Microscopy With Aided Energy
Dispersive X-ray (SEM/EDAX)



Magnification up to nano scale

Fractography

High magnification of SEM images is the study on surface contour related to fractography and surface morphology. This method is used in this assessment to study the surface morphology of fracture surface to identify the failure mode. SEM is capable using In lens, Backscattered Electron or Secondary Electron

Particle and Debris Elemental Analysis

Energy-dispersive X-ray Analysis (EDX) is an analytical technique used for the elemental analysis or chemical characterization of a sample. EDX can be used to determine which chemical elements are present in a sample and can be used to estimate their relative abundance.

Why Get Certified

- Showcase safety, integrity and reliability and eco-friendliness of related construction materials.
- Gain access to larger markets with equally or more stringent materials requirements.
- Boost company reputation and enhance market share.
- Improve the efficiency of the production process through reliable and competent testing and failure investigation.
- Reduce the risk of liabilities that could arise from the use of substandard quality materials.
- Deliver consistent quality products that meet the expectations of stakeholders.

Application Process

